

## Japanese Beef Products Guide Book



Issued by: The Ministry for Agriculture, Forestry and Fisheries Japan

1-2-1 Kasumigaseki, Chiyoda-ku, Tokyo Japan 100-8950 TEL: 03-3502-8111  
URL: <http://www.maff.go.jp>

Go to the MAFF website to subscribe to our mail magazine.

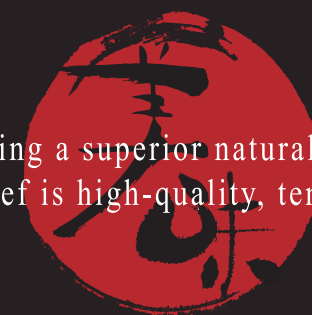
Guide Book Contact: Ministry of Agriculture, Forestry and Fisheries, Agricultural Production  
Bureau, Livestock Industry Department, Meat and Egg Division  
TEL: 03-3502-8473



# Japanese Beef Products Guide Book



Boasting a superior natural flavor,  
Japanese beef is high-quality, tender and juicy.



## Message from MAFF

### Greetings

I would like to take this opportunity to thank you for your loyalty towards Japanese beef.

Wagyu is a breed of cattle unique to Japan and can also be said to be part of Japan's heritage. The unrivaled quality and taste of Wagyu has been recognized around the world, and exports are increasing in line with the recent Japanese cuisine boom.

This guidebook has been prepared in an effort to introduce cutting and slicing methods so to optimize the characteristic qualities of each cut, including cuts that were previously uncommon overseas, and for a range of dishes including barbecue and hot pot recipes.

I hope that this guidebook provides more opportunities to enjoy the great taste of Wagyu.

MAFF, Agricultural Production Bureau  
Director-General: Kunio Naito



## CONTENTS

JAPANESE BEEF PRODUCTS 2008

● Introduction to Wagyu (Japanese Beef)	3
● The universal Wagyu mark and quality grades	5
● Beef cuts	6
Illustration of beef cuts	7
Recommended cooking methods	8
Chuck roll	9
Shoulder clod	11
Neck	13
Chuck tender	14
Brisket	15
Shank	17
Fillet	18
Ribloin	19
Sirloin	20
2 Rib short rib	21
Short plate	23
Gooseneck round	25
Top-round	27
D Rump	29
Knuckle	31
Slicing/cutting guide lines	33
● Wagyu recipes	34
American cuisine	35
Italian cuisine	37
Chinese cuisine	39
Korean cuisine	41
Japanese cuisine	43
● Meat safety measures	45





## Wagyu – Refined by Japanese food culture

Including teppanyaki, sukiyaki and shabushabu, there is a wide variety of Japanese dishes that allow one to fully appreciate the tenderness and flavor of Wagyu. Teppanyaki is a simple method of drawing out the full flavor of the ingredients, while sukiyaki and shabushabu emphasize the delicate flavor and mouth-watering texture of thinly sliced beef. Japanese food culture places emphasis on enjoying the natural flavors of ingredients and has developed Wagyu into what it is today. Wagyu is unrivalled in its great taste and is now gaining popularity around the world as a luxury ingredient.



## Bringing the great taste of globally acclaimed Wagyu to dinner tables worldwide

The tenderness and delicate flavor of Wagyu is in high demand in Japan, where cuisine honors the inherent flavor of the ingredients. In response to such demand, Japan has refined its production technologies and the rest of the world, which is more accustomed to slightly more textured red meat, has been taken by surprise by the texture of Wagyu - a new style beef that once tried will not soon be forgotten. Wagyu, a relatively rare commodity, has the potential to increase the possibilities and value of food cultures around the world and bring with it significant change.



## Raised with loving care for perfect Wagyu

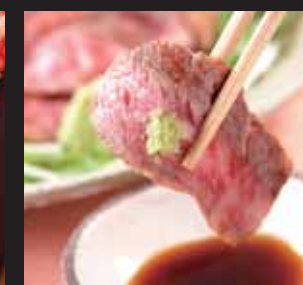


Each and every head of Wagyu cattle is given time and attention, and raised lovingly by feeding specialists in the vast open spaces of Japan. In addition to a well managed environment – a carefully designed diet including rice, hay, wheat, and bran to raise cattle that are both healthy and produce great tasting beef, and cattle sheds kept in immaculate condition so as not to stress the delicate cattle – Wagyu cattle are bred with human compassion and attention. Outstanding production technologies and the pride of the master in pursuit of perfect Wagyu gives way to a superior quality found nowhere else in the world.



## The melt-in-your-mouth texture is unique to Wagyu

Perhaps the most prominent characteristic of Wagyu is the marbled fat distributed through the muscle fibers known as “shimofuri” in Japan. The fine texture of Wagyu gives an extremely tender, melt-in-the-mouth quality. Wagyu is also known for its sweet, full-bodied aroma known as “wagyuko” or beef aroma. When cooking, Wagyu is known to give off an aroma that is likened to coconut or fruit. This beef aroma serves to further draw out the great taste of Wagyu. The flavor of Wagyu does not only satisfy the taste buds, but all five senses and has the potential to significantly change beef cuisine in countries around the world.







■ universal Wagyu mark

# The Wagyu brand is increasing in popularity all over the world

## Authentic Japanese Wagyu comes sealed with the universal Wagyu mark

Wagyu is increasing in popularity all over the world. This mark is only given to authentic Japanese Wagyu and we hope that you use it as a guide to selecting high-quality, great tasting authentic Wagyu meat products. Try one of the authentic Wagyu products today.

### What breeds of cattle produce Wagyu?

Only breeds that satisfy the following conditions can be accredited as Wagyu beef.

#### ■ Breeds

1. Japanese Black Cattle
2. Japanese Brown Cattle
3. Japanese Shorthorn Cattle
4. Japanese Polled Cattle
5. Cross breeds resulting from interbreeding of 1.- 4. above
6. Cross breeds from the interbreeding of 1. – 5. or 5. above. Proof of the above must be able to be evidenced by means of a registration system in accordance with the Improvement and Increased Production of Livestock Act and through the cattle traceability system \* .

\* Japan has established a beef traceability system that provides production records of domestic cattle in Japan from the time they are born up until the time they reach the consumer.  
Homepage Address: <https://www.id.nlb.go.jp/english/top.html>  
For more information, please see p.45 and 46, "High-level Measures to Ensure Meat Safety", of the guidebook

#### ■ Breeding environment

1. Must be cattle born and bred in Japan.
2. Ancestry of the cattle must be able to be confirmed by a traceability system.

#### High-grade Wagyu. Beef brands bred in specific regions of Japan.

Included under the category of Wagyu are beef brands that are extremely popular that have been bred using improved feeding methods and feed individually developed in specific regions throughout Japan. A large majority of these beef brands are given the name of the production area such as Matsuzaka Beef, Yonezawa Beef and Maesawa Beef.

## Grading system to clearly identify meat yield and quality

To ensure fair trading, beef in Japan is currently graded by the Japan Meat Grading Association. Beef is graded based on the yield grade and meat quality. The yield grade refers to the ratio of meat to total weight of the carcass and is classified into three grades from A to C with A being a grade of higher yield. Meat quality is classified into five grades from 5 to 1 based on beef marbling, color and brightness of the meat, firmness and texture of the meat and color and brightness of the fat. The lowest of the four individual grades is the final grade allocated to the meat. A thorough grading system of 15 grades through a combination of the above two elements ensures a clear indication of Wagyu meat quality and yield grade.

#### ■ Standard grades and how they are displayed <Example>

Yield Grade	Meat Quality Grade					B
	5	4	3	2	1	
A	A 5	A 4	A 3	A 2	A 1	3
B	B 5	B 4	B 3	B 2	B 1	
C	C 5	C 4	C 3	C 2	C 1	



# Wagyu Product Guide

-A new range of selections-

This catalog, while also reviewing standard cuts that are popular in the marketplace, will also focus on introducing cuts that until now have been used with less frequency.

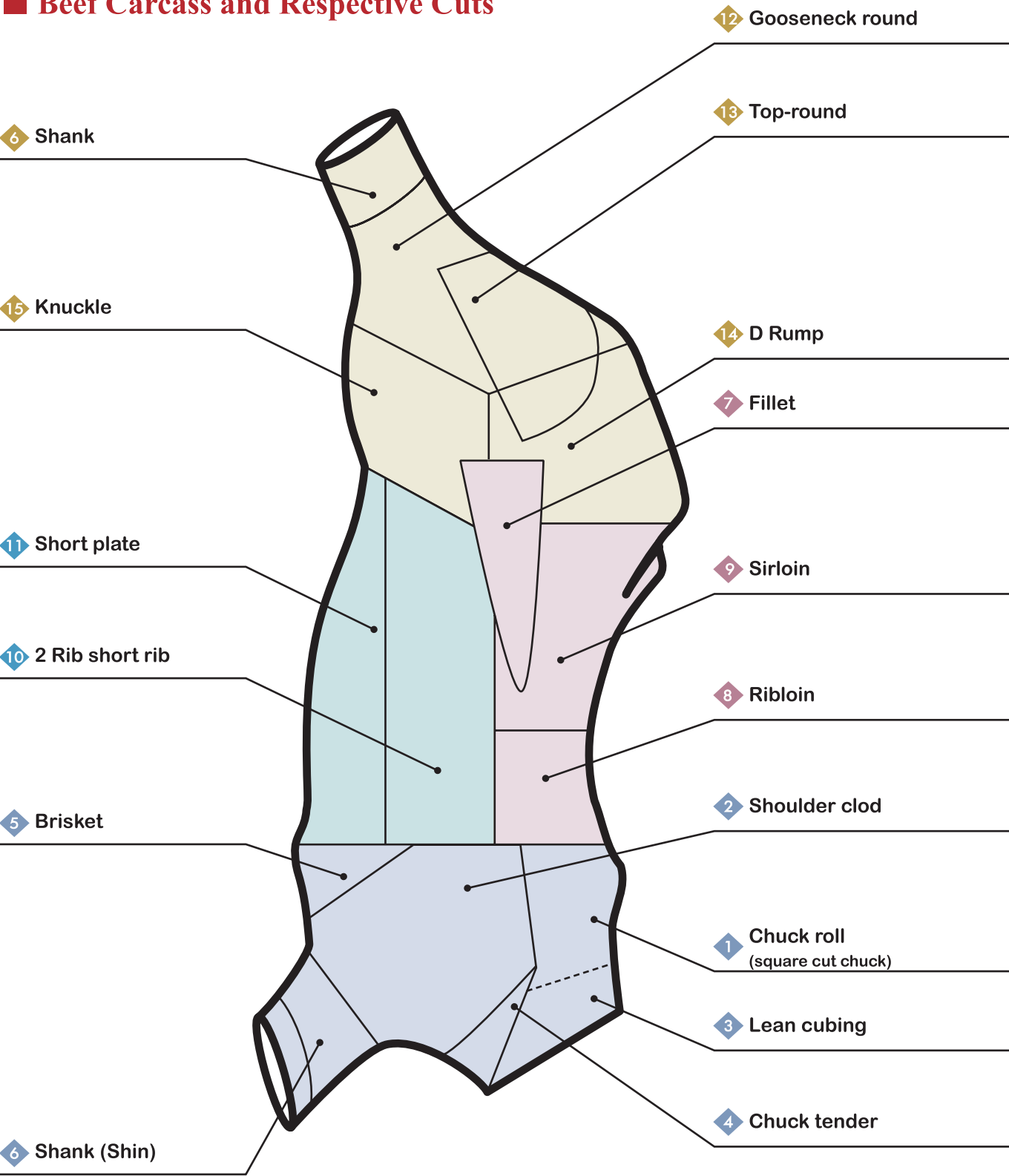
We hope that th]]e catalog serves as a guideline to exploring the possibilities for new product development.





# Illustration of Beef Cuts

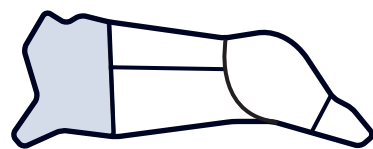
## Beef Carcass and Respective Cuts



## Recommended Cooking Methods for Each Cut

★ = Specially Recommended Cuts

Part of Meat		Steak	Barbecue	Roast Beef	Stewing	Sukiyaki	Shabu-shabu
Primal Cut	Sub-primal Cut						
Forequarter	1 Chuck roll ★ (Square cut chuck)	◎	◎		◎	◎	◎
	2 Shoulder clod	◎	◎		◎	◎	◎
	3 Neck		○		◎	○	
	4 Chuck tender		◎	◎			
	5 Brisket		◎		◎	○	◎
	6 6 Shank		○		◎		
Loin	7 Fillet ★	◎	◎	◎			
	8 Ribloin	◎	◎			◎	◎
	9 Sirloin	◎	◎	◎		◎	◎
Shortplate brisket	10 2 Rib short rib ★	○	◎		◎	○	
	11 Short plate ★	○	◎		◎	○	◎
Round	12 Gooseneck round ★		○	○	◎	◎	○
	13 Top-round	◎	◎	◎	○		◎
	14 D Rump	◎	◎	◎		○	○
	15 Knuckle	◎	◎	◎		◎	○



## Overview of Raw Meat

The chuck roll is the forequarter portion that is cut between the 6th and 7th rib perpendicular to the dorsal line excluding the shoulder clod and the brisket. It is divided into the chuck and the neck. The chuck roll can be well-marbled and the meat is tender and tasty making it perfect for sukiyaki and barbecuing.



## Culinary Applications

Steak

Barbecue

Stewing

Sukiyaki

Shabu-shabu



■ Chuck roll



■ Neck

## PRIMAL CUT



■ Photo Trimmed



Removing the neck

For the neck, see P.13



Cross-section between the 2/3 thoracic vertebrae: Marbling can be clearly seen in this cut and shows that it has been cut perpendicular to the muscle fiber.



Cross-section between the 7/1 cervical vertebrae: The point from which marbling starts is used as the partition line.



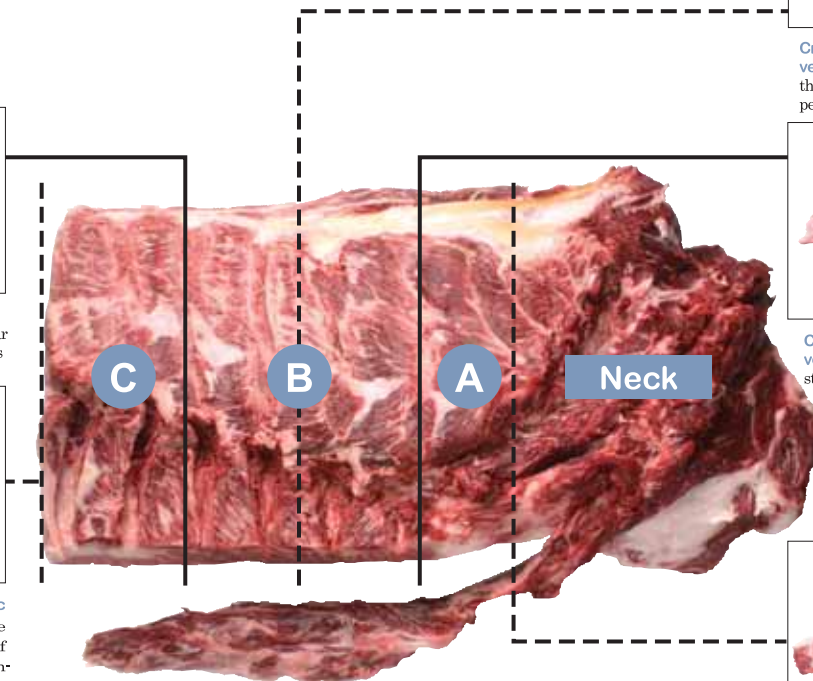
Cross-section between the 3/4 cervical vertebrae: Interface between the neck and chuck (May differ depending on standards)



Cross-section between the 4/5 thoracic vertebrae: The portion where inter-muscular fat is significant and the core of the chuck is smaller is used as the partition line.



Cross-section between the 6/7 thoracic vertebrae: Cross section between the chuck and the ribloin. The core of the loin is large with a proportionate balance of lean meat and fat.



Neck

## RETAIL CUT



■ Cut A  
This portion is closest to the neck. The meat is a little tough and fibrous however has a strong flavor with little fat. (high proportion of lean meat)



Machine slicing:  
When packaging, take extreme care as the fold is subject to cracking



Fold the upper and bottom portions back when packing



Shabu-shabu slices



■ Cut B  
Dividing into the chuck eye log and the chuck flap



Inserting a cleaver between the intercostal muscle and the chuck eye log



Dividing



Chuck eye log and chuck flap



■ Chuck eye log



Slicing



Steak cuts



Barbecue cuts



■ Chuck flap Trimmed



Slicing



Steak cuts



Barbecue cuts



■ Cut C

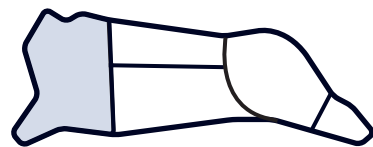


Removal of cap muscle:  
Cutting along the connective tissue



Steak cuts





## Overview of Raw Meat

The shoulder clod is a well-muscled area with a large proportion of muscle and muscle tissue and is made up of both tough and tender meat. The meat typically has a deep color and a strong flavor. It can be divided into cuts for sukiyaki, barbecuing and steak etc.



## Culinary Applications

Steak

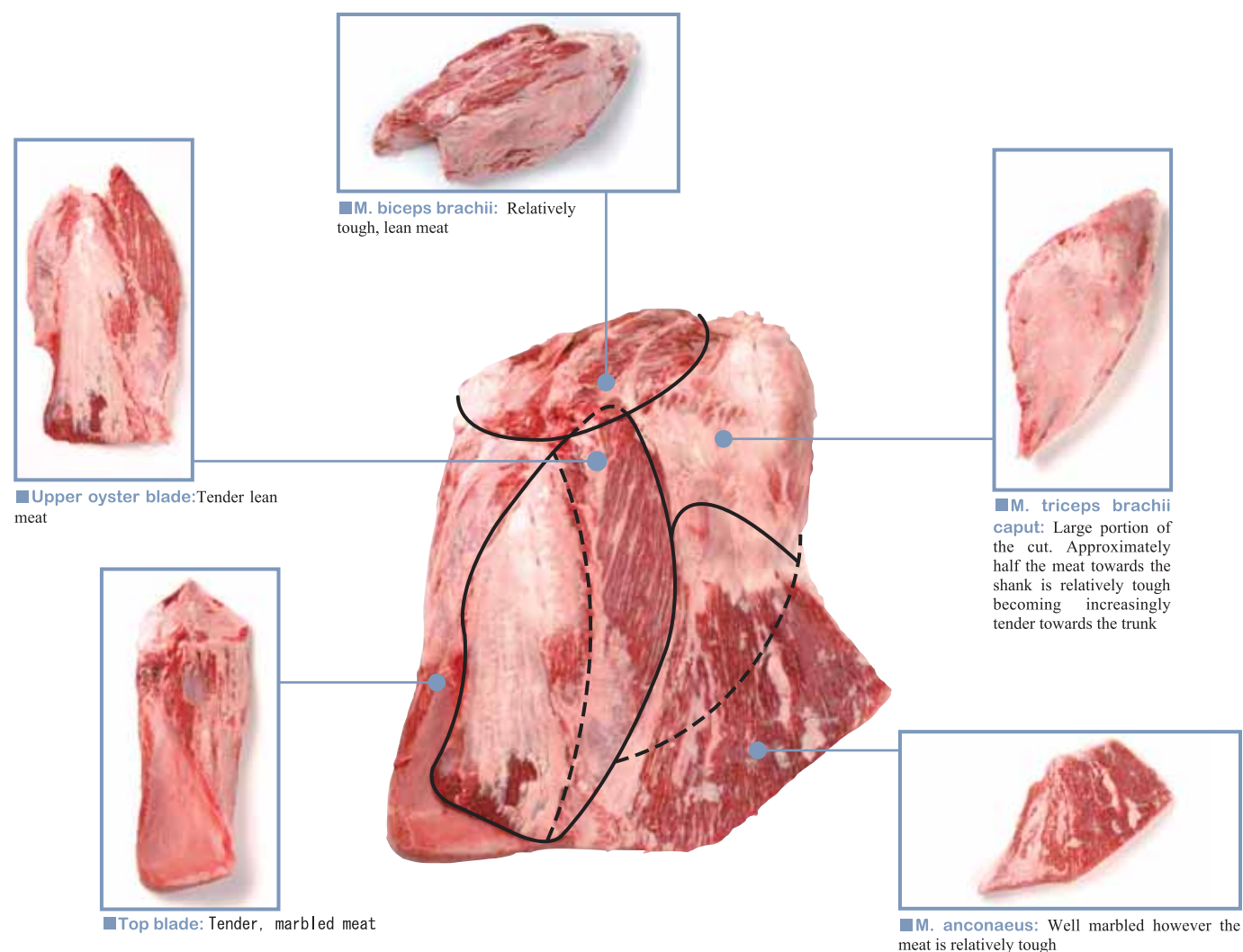
Barbecue

Stewing

Sukiyaki

Shabu-shabu

## PRIMAL CUT



## RETAIL CUT 1

## ■ Slicing from the entire clod



■ Shoulder clod Trimmed



Slicing from the shank end: Slicing the entire clod allows you to get larger sliced cuts



Shank end



Trunk end



Trunk end



Dividing along the fat



Steak cuts

## RETAIL CUT 2

## ■ Preparing meat products from the primal cut



■ Top blade Trimmed

Top blade cuts



Steak cuts



\*Marbling is clearly visible from a cross-sectional view



Dividing into two after removing the central muscles



Barbecue cuts



■ M. triceps brachii caput Trimmed



Shabu-shabu slices



Barbecue cuts



Steak cuts

## ■ Other product examples



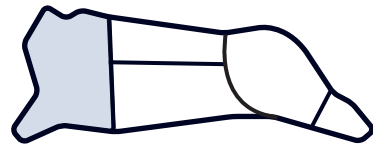
Upper oyster blade



M. biceps brachii



M. anconaeus



### Overview of Raw Meat

The neck meat comes from the portion of the neck that is well-muscled. The meat is tough, rough-textured, and lean. The meat is also comprised of a large proportion of muscle tissue making it ideal for stewing. It can also be combined with other cuts for BBQ cuts and slices for stewing.



### Culinary Applications

Barbecue

Stewing

Sukiyaki



Longus colli



Neck



Removing the longus colli 1 thoracic vertebrae should serve as the partition line



Longus colli



Barbecue cuts



Neck



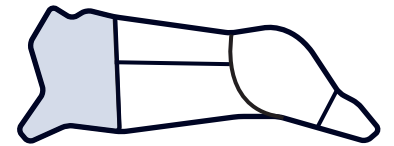
Stewing cuts



Slices for stewing



Mince



### Overview of Raw Meat

The chuck tender is rare because only 2kg can be obtained from each animal. This is the part of the forequarter running from the forequarter to the shoulder clod however the meat is similar to round. The chuck tender is well marbled with a subtle, sweet taste that grows stronger the more it is chewed.



### Culinary Applications

Barbecue

Roast beef



Chuck tender Trimmed



Dividing into two halves along the central muscle



Roast beef block



Cutting in half

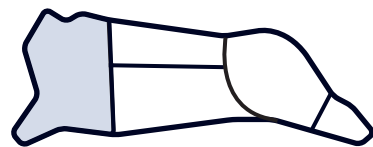


Bisecting the larger half and then cutting into blocks for individual sale



Barbecue cuts





### Overview of Raw Meat

The brisket refers to the chest area of the cow and is made up of cuts with very different meat qualities including fatty and tough pectoral meat, the brisket (A) located under the rib, brisket (pectoral meat) that is lean and tender, and chuck short rib (chuck rib) that has more flavor, marbling and a good appearance.

\* Cut perpendicular to the muscle



### Culinary Applications

Barbecue

Stewing

Sukiyaki

Shabu-shabu

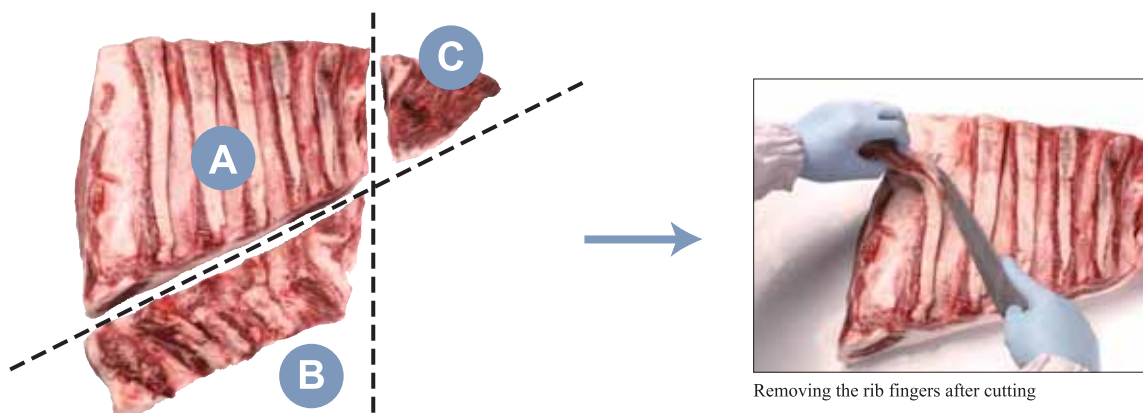


■ Chuck short rib

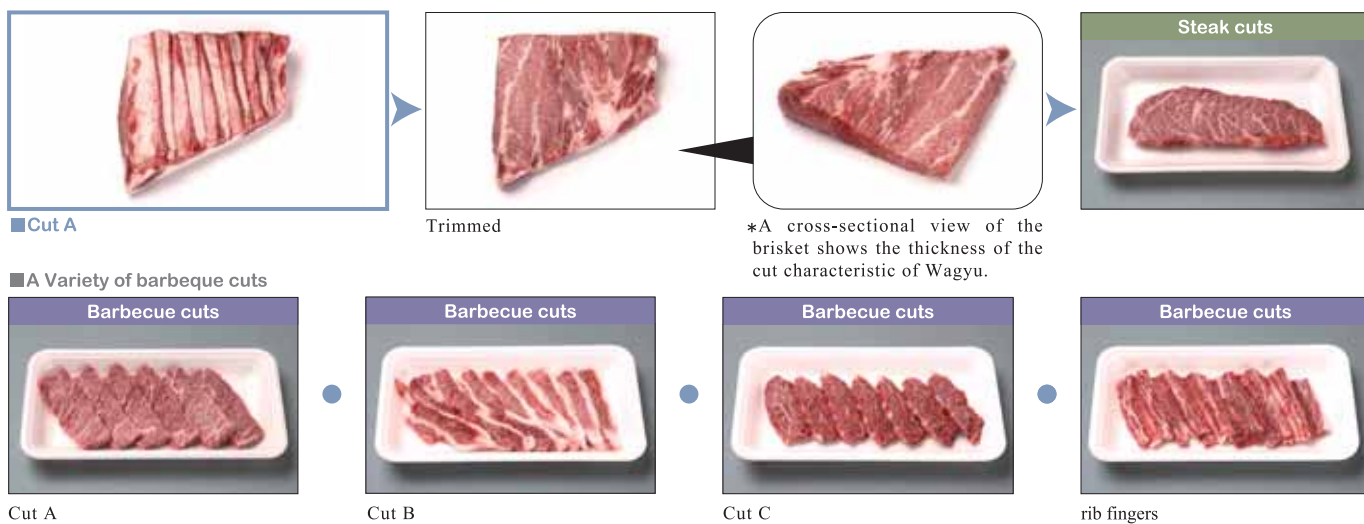


■ Brisket

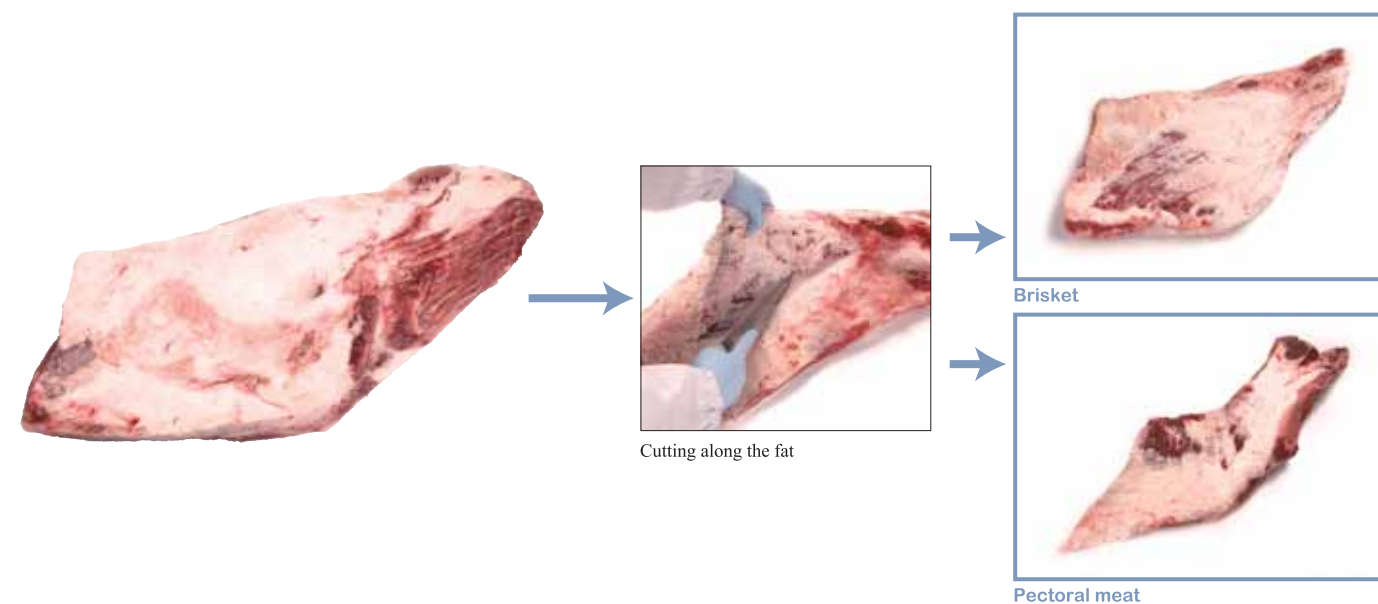
### PRIMAL CUT 1 (Chuck short rib)



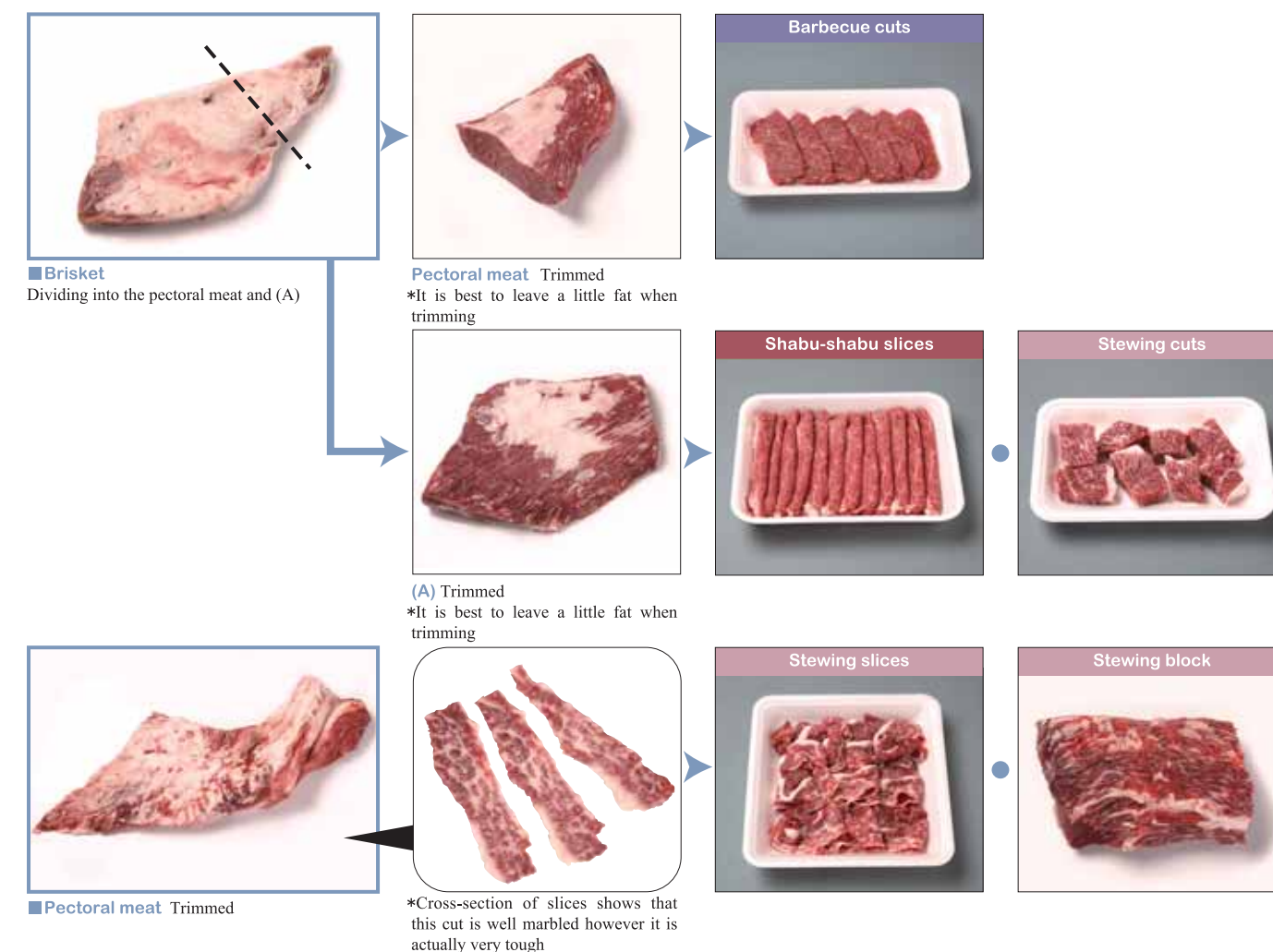
### RETAIL CUT 1 (Chuck short rib)

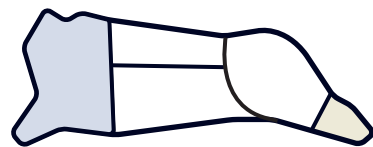


### PRIMAL CUT 2 (Brisket)



### RETAIL CUT 2 (Brisket)





## Overview of Raw Meat

The shank includes the shin and the shank. The shin is well-muscled and consists primarily of lean meat. Generally it is prepared for ground or chopped meat. The shin can be divided into the shin body and the (C). The shank is also well-muscled and the meat lean.



Shin

## Culinary Applications

Barbecue

Stewing



Shank



■Photo of shin



Shin Trimmed



Removing the (C) from the shin



(C) Trimmed

## Barbecue cuts



■Photo of Shank



Shank Trimmed

## ■Shank meat products (Shin and shank)

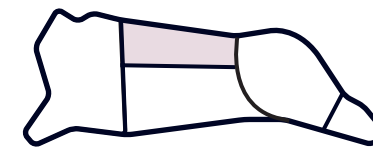
## Stewing cuts



## Fibrous meat for stewing



## Mince



## Overview of Raw Meat

The fillet is located on the inside of the loin, contains practically no muscle and is characterized by its fine texture, tenderness and low fat content. It accounts for only 2% of the entire dressed carcass and it is a luxury item making it the most expensive cut of beef available. Care needs to be taken as the color of the meat degrades rapidly.



## Culinary Applications

Steak

Barbecue

Roast Beef



Preparation: Remove any flap meat from the short plate



Trimmed

※Side view:  
The thickness of this cut is characteristic of Wagyu

■A: (D)



## Steak cuts



## Diced steak



■B: Châteaubriand



## Steak cuts 01



## Steak cuts 02

The sinew has been removed from the previous cut leaving only the tender portion giving it a higher commercial value.

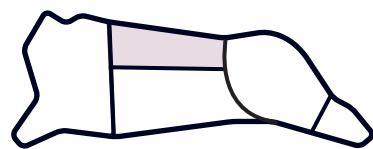


■C: Fillet Mignon



## Steak cuts





## Overview of Raw Meat

The ribloin is the loin located next to the chuck at the dorsal side of the rib area. The meat is thick and fine textured. It is often well marbled giving it a full-bodied flavor.



## Culinary Applications

Steak

Barbecue

Sukiyaki

Shabu-shabu



■ Rib Cap



■ Ribloin

## PRIMAL CUT



■ Photo



Dividing (cap off)



Rib cap



Ribloin

## RETAIL CUT



■ Photo



Slicing the ribloin allows for larger cuts of meat.



Sukiyaki / Shabu-shabu slices



■ Ribloin Trimmed

Cutting

A large cross section allows for good size steaks



Steak



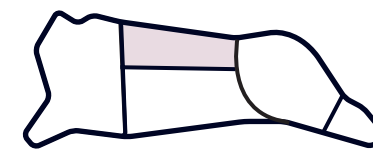
■ Rib Cap Dividing the rib cap after trimming



Barbecue cuts



BBQ cuts



## Overview of Raw Meat

The sirloin, similar to the fillet is considered a high-quality cut and is located behind the ribloin. Its meat is finely textured and tender. It holds its shape well and it is possible to obtain identically sized cuts making it ideal for steak.



## Culinary Applications

Steak

Barbecue

Sukiyaki

Shabu-shabu

Roast beef

## PRIMAL CUT



■ Photo



Make an incision every 5cm along the entire width of the fat



Removing the upper fat followed by the back strap



After removing the back strap

## RETAIL CUT



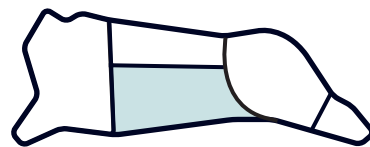
■ Photo Trimmed



Steak cuts



Sukiyaki / Shabu-shabu slices



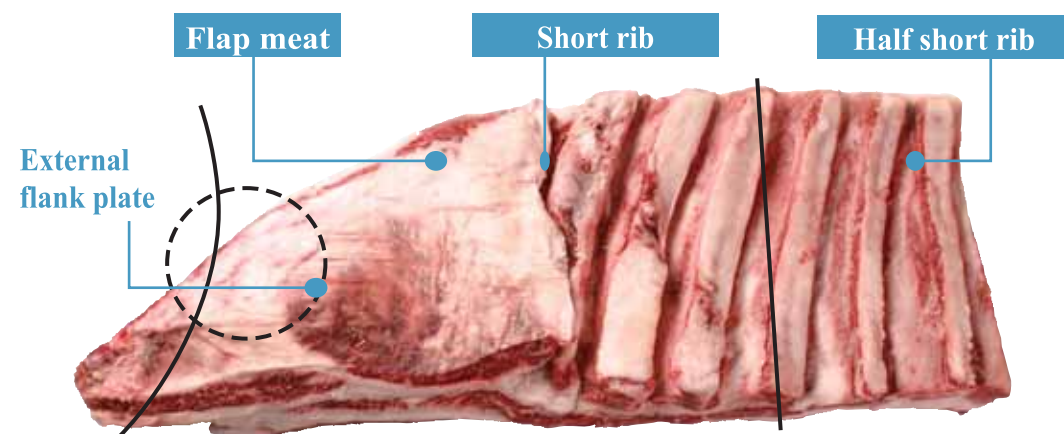
### Overview of Raw Meat

The 2 Rib short rib is the upper half of the short plate located at the belly. The short plate is well-muscled making the 2 Rib short rib fibrous with a proportionally large amount of connective tissue. The meat has a rough texture however the lean meat and fat are proportionately mixed giving it a rich taste and flavor. The 2 Rib short rib is also made up of a cut known as the flap meat that has a large proportion of lean meat that is well marbled.

\*Cut perpendicular to the muscle



### PRIMAL CUT



Removing the External flank plate



Removing the flap meat



Flap meat Trimmed



\*The thickness of this cut visible from the back is characteristic of Wagyu.



Removing the half short rib



Half short rib Trimmed



Short rib Trimmed

### Culinary Applications

Steak

Barbecue

Stewing

Sukiyaki

### RETAIL CUT



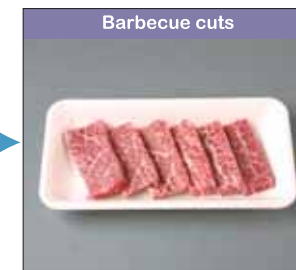
Half short rib Trimmed



Removing the rib fingers



Cutting along the fat



Central cut



Rib fingers



Bottom cut



Flap meat Trimmed



Central thick cut



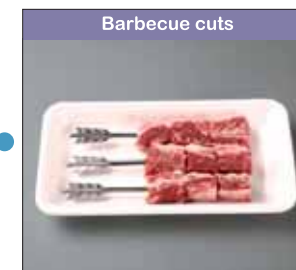
Barbecue cuts



Short rib Trimmed



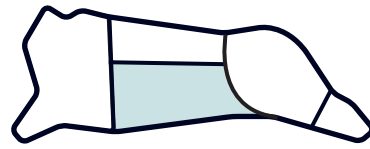
Stewing slices



Rib fingers

Barbecue cuts





### Overview of Raw Meat

The short plate is the bottom half of the short plate located at the belly. The meat, similar to the 2 Rib short rib, has a rough texture however is characterized by its rich flavor. The short plate includes a cut known as the flank steak with a proportionate distribution of lean meat and fat.



### Culinary Applications

Steak

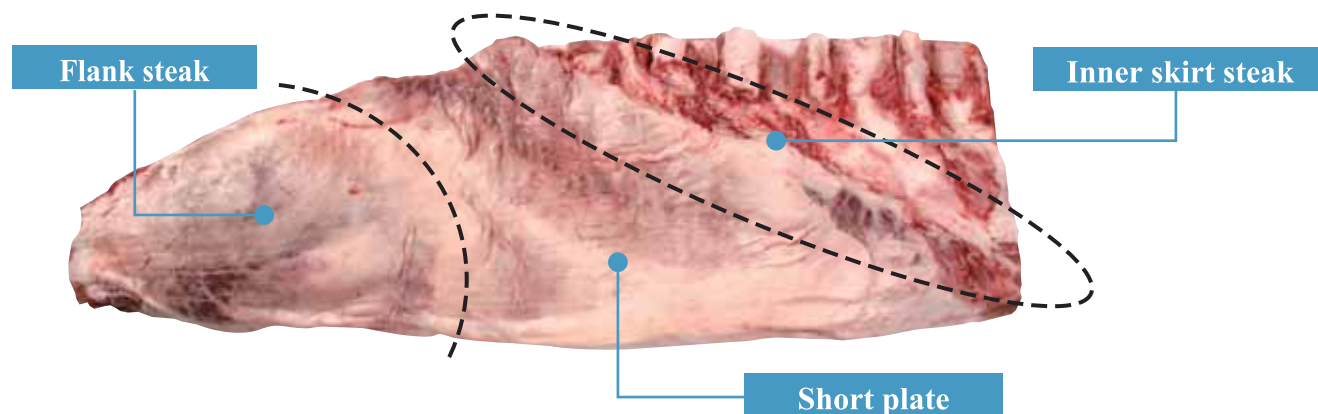
Barbecue

Stewing

Sukiyaki

Shabu-shabu

### PRIMAL CUT



Removing the inner skirt steak



Inner skirt steak Trimmed

\* It is recommended that the skin be left on the inner skirt steak unless for immediate use as the meat color changes quickly once the skin is removed.



Removing the flank steak



Flank steak Trimmed



Short plate Trimmed

### RETAIL CUT



■ Short plate Trimmed  
Cut along the muscle fibers

Barbecue cuts



Blocks for stewing



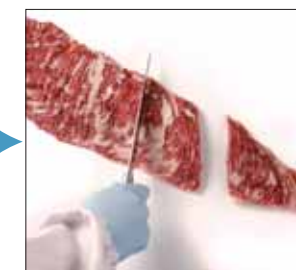
Slice

Slicing the whole cut allows for larger slices.

Sukiyaki cuts



Inner skirt steak Trimmed

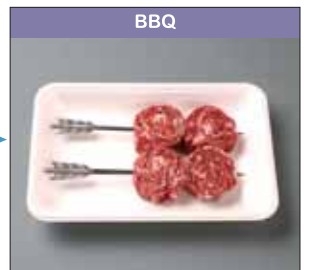


Cut along the muscle fibers

Barbecue cuts



Rolled and skewered



Kabobs

BBQ



Flank steak Trimmed



Cut along the muscle fibers

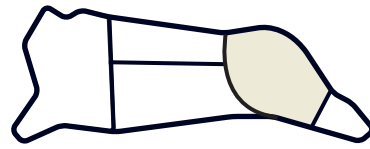
Barbecue cuts



Diced steak



Steak cuts



## Overview of Raw Meat

The gooseneck round is the lean, well-muscled part of the round. The meat generally has a rough texture and is relatively tough. The gooseneck round is divided into three parts: eye of round, a cut that is paler in color and more elastic than other parts; the heel, a cut prepared for sale after removal of the M. flexor digitorum superficialis located in the center; and the outside round (gooseneck round) that is commonly used for stewing.



## Culinary Applications

Barbecue

Stewing

Sukiyaki

Shabu-shabu

Roast beef



Gooseneck round



Heel

## PRIMAL CUT



Photo



Divided



Gooseneck round



Heel



Gooseneck round



Divided



Outside round



Eye of round



Heel



Divided



Heel



M. flexor digitorum superficialis

## RETAIL CUT



Outside round Trimmed

Slice

Slicing the whole cut allows for larger slices



Sukiyaki cuts



Trimming: Trimming the cut perpendicular to the muscle fibers provides for an attractive cut Shabu-shabu slices



Shabu-shabu slices

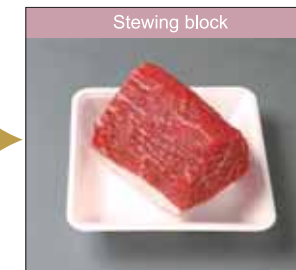


Shabu-shabu slices

Arrangement



Eye of Round Trimmed



Stewing block



Shabu-shabu slices



Shabu-shabu slices

Arrangement



Heel



Trimmed Divided into two along the center muscle after trimming



After separation



Barbecue cuts

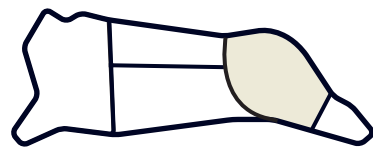


M. flexor digitorum superficialis Trimmed



Marketed for stewing due to the large proportion of muscle fibers





## Overview of Raw Meat

The top-round consists of a large block with a proportionately large amount of lean meat. It has a cover of fat however very little underneath. Meat quality can vary from the outside, towards the gooseneck round to the inside, towards the knuckle. Towards the gooseneck round the meat contains proportionately more fat, however has a rough texture with slightly tough meat. On the other hand, meat towards the knuckle is characteristically tender.



## Culinary Applications

Steak

Barbecue

Stewing

Shabu-shabu

Roast beef

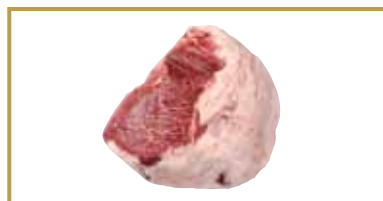


■ Top-round



■ M. gracilis (cap)

## PRIMAL CUT



■ Photo



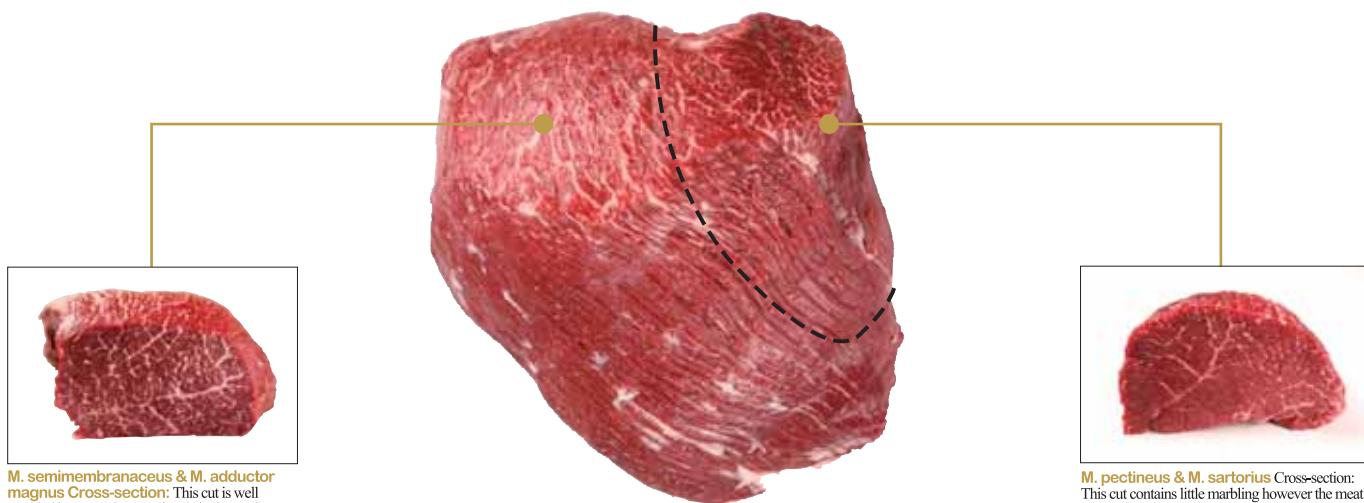
Division (Cap Off)



Top-round



M. gracilis (cap)



M. semimembraneus & M. adductor magnus Cross-section: This cut is well marbled however the meat is relatively tough



■ Top-round



Turning it over and cutting along the connective tissue



M. semimembraneus &amp; M. adductor magnus



M. pectineus &amp; M. sartorius

M. pectineus & M. sartorius Cross-section: This cut contains little marbling however the meat is tender

## RETAIL CUT



■ Top-round



Slicing



Shabu-shabu slices



■ M. semimembraneus &amp; M. adductor magnus



Steak cuts



Steak cuts



Cutting the blocks for sale



Barbecue cuts



Roast beef block



■ M. pectineus &amp; M. sartorius



Steak cuts



Roast beef block



■ M. gracilis (cap)



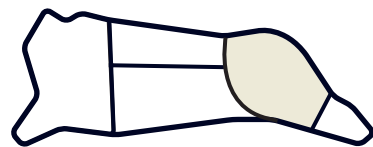
Stewing cuts



Trimming



Rolled into a block for roasting



### Overview of Raw Meat

The D Rump can be divided into the sirloin butt that runs into the sirloin and the top sirloin cap that runs into the gooseneck round. The D Rump has a very attractive color, is lean, finely-textured and is characterized by the proportionate fat and tender quality. The top sirloin cap has a deep color and a strong flavor however it is important to pay attention to the direction of muscle fiber when cutting it for retail.



### Culinary Applications

Steak

Barbecue

Sukiyaki

Shabu-shabu

Roast beef



■ Sirloin butt



■ Top sirloin cap

### PRIMAL CUT



■ Photo



Cutting along the connective tissue and fat



Sirloin butt



Top sirloin cap



■ Sirloin butt



Removing the (B)



(B)



Removing the M. piriformis



M. piriformis



Dividing the M. gluters medius and the M. glutens profundus along the center muscle



M. gluters medius



M. glutens profundus

### RETAIL CUT



■ Top sirloin cap Trimmed



\*A cross-sectional view shows that the muscle fibers form a radial pattern



Steak cuts



Barbecue cuts



■ M. glutens profundus Trimmed



Steak cuts



Roast beef block



■ M. gluters medius Trimmed



Steak cuts



Divided into 2 down the center



Steak cut

It is possible to cut the M. glutens profundus into good size steaks



■ M. piriformis Flipped over to show the underside

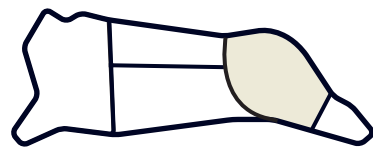


Trimmed



Diced steak





### Overview of Raw Meat

The knuckle is spherically-shaped and consists primarily of lean meat. It consists of four parts: the inside knuckle muscle, slightly deep in color and tender; the knuckle main muscle that has muscle running into the center, is fine textured and tasty; the outside knuckle that is deep in color and slightly tough; and the tri-tip that has some marbling but is not as tender as would be expected from the appearance.

### Culinary Applications

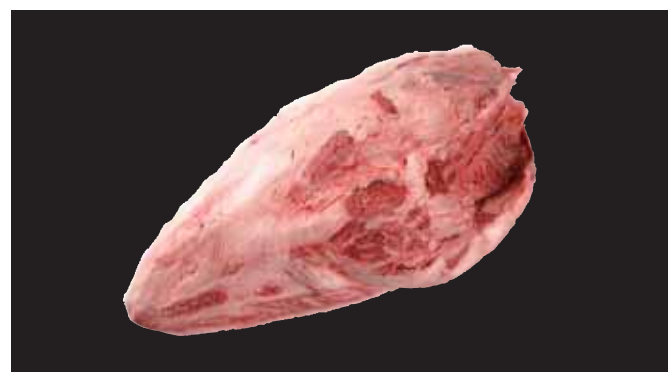
Steak

Barbecue

Sukiyaki

Shabu-shabu

Roast beef



■ Knuckle



■ Tri-tip



### PRIMAL CUT



■ Photo



Dividing



Knuckle



Tri-tip



■ Knuckle



Removing the inside knuckle muscle



Inside knuckle muscle



Dividing into the knuckle main muscle and the outside knuckle along the center muscle



Knuckle main muscle



Outside knuckle

### RETAIL CUT



■ Knuckle Trimmed



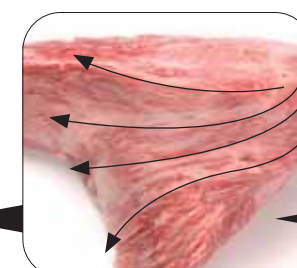
Slicing the whole cut allows for larger slices



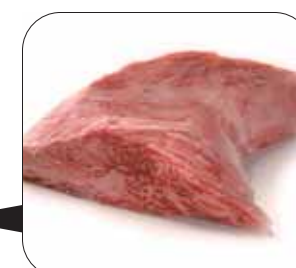
Sukiyaki slices



■ Tri-tip Trimmed



\*The muscle fibers fan out in a radial pattern



\*A side view shows that Wagyu is significantly thick



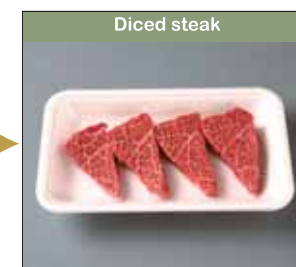
Barbecue cuts



■ Inside knuckle muscle Trimmed



Divided into three along the center muscle



Diced steak



■ Knuckle main muscle Trimmed



\*Marbling is clearly visible in a cross-sectional view from the back



Steak cuts



■ Outside knuckle Trimmed



Shabu-shabu slices



# How to slice Wagyu to achieve maximum value

In addition to general cutting methods, there is a technique to slice Wagyu and optimize its fine texture and tenderness with a special slicer. Following are some guidelines to using the slicer and arranging the sliced meat effectively.

## Slices and Off-cuts

Slices are thin slices taken from large blocks of one particular cut. Off-cuts are smaller pieces or slices from a combination of differing cuts and are used in accordance with the cooking method and the particular cut. Slices are ideally suited to dishes like shabu-shabu and sukiyaki while off-cuts are perfect for stewing. Off-cuts in particular produce a full-bodied flavor in just a short time making them convenient for use in quickly prepared meals such as stews.

## Guidelines for arranging sliced meat

### ■ Point



Fold both the right and left sides inwards



Fold the top and bottom edges under the slice

### ■ Examples of effective arrangement

Sukiyaki/Shabu-shabu slices



Sukiyaki/Shabu-shabu slices



## Guidelines to using the slicer

### ■ Setting cuts onto the slicer (Good Example)



Lean cuts and fatty cuts are placed alternately. This will help to achieve uniform cuts.



Seen from above:  
The topmost front side of the meat will form the "face" of the product so it is best to use attractive looking cuts.

### ■ Setting cuts onto the slicer (Bad Example)



Lean cuts and fatty cuts are placed in groups. This will result in inconsistent lean and fatty cuts in the finished retail product.



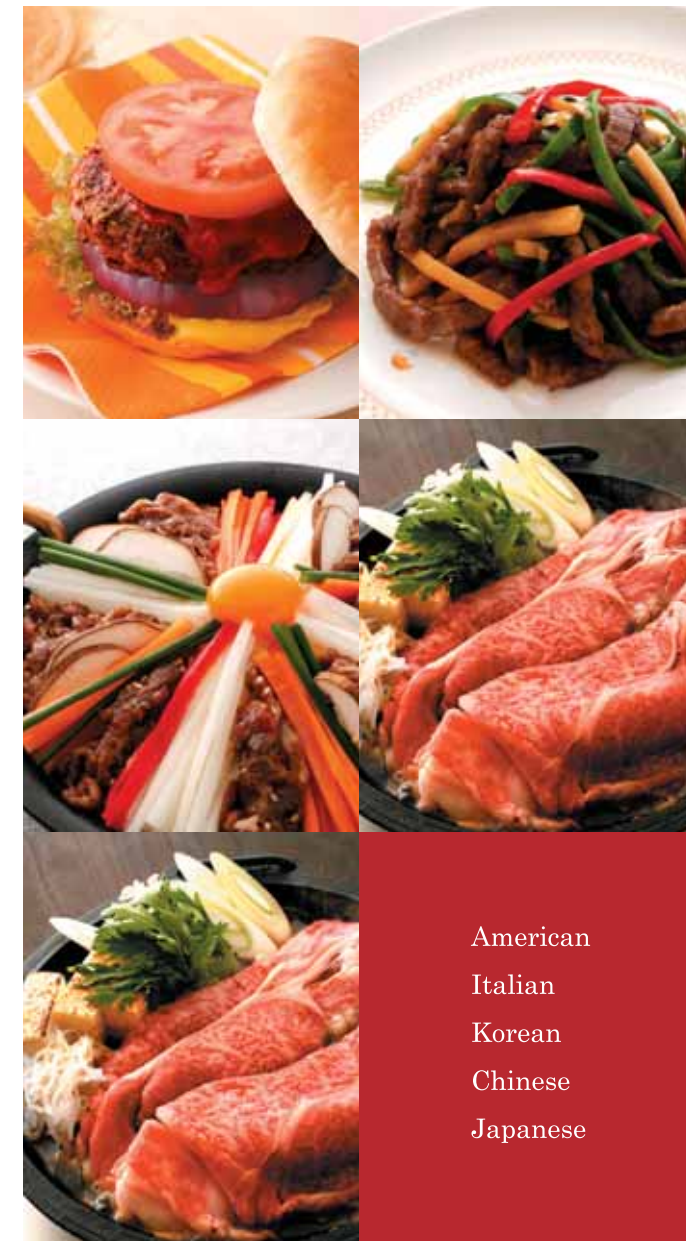
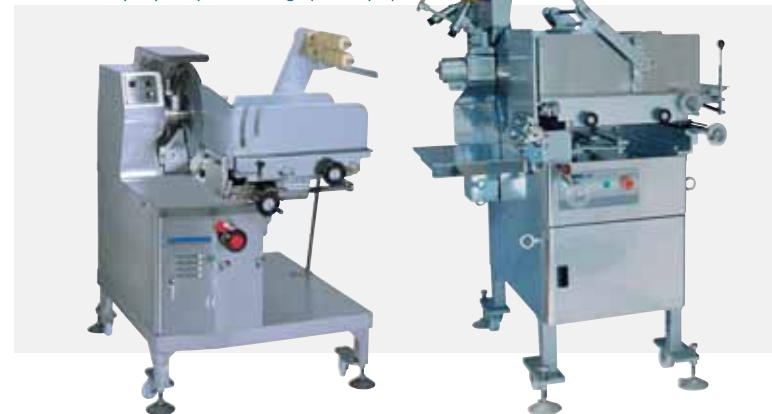
Be careful not to try and slice too much meat at one time. The blocks in the photo to the left have also been placed with the muscle fibers sitting parallel to the blade. This will result in an unfavorable texture when eating. (The meat will be tough)

### ■ Arrangement

Stewing cuts



### ■ Slicer to help expand product range (1 example)



American  
Italian  
Korean  
Chinese  
Japanese

## Tasty Suggestions for Wagyu in Cuisine from Around the World

■ American Cuisine ■ Italian Cuisine ■ Korean Cuisine ■ Chinese Cuisine ■ Japanese Cuisine

The following pages introduce recipes incorporating Wagyu into signature dishes from around the world.

In particular, recipes take a diverse approach to incorporate relatively unused cuts, expanding your possibilities in the kitchen giving rise to a new dimension of flavor.



■ Measurement conversions 1cm=0.39inch/ 100g=3.5oz/ 1kg=35oz/ 1tsp=0.1pt/ 1tbs=0.3pt/ 100°C=212F  
★=Specially recommended cuts

### Hamburgers



Recommended cuts

3 Neck 6 6 Shank

Ingredients

500g beef mince	1 red onion
1 large egg	Tomato ketchup
2-4tbs fresh bread 2tbs milk	4 lettuce leaves
Salt & pepper to taste	4 slices tomato
½ onion	4 hamburger buns
1tbs garlic powder	Butter
	Salad oil

- Method
1. Roughly chop onion and thickly slice red onion and tomato into 1cm rings.
  2. Soak bread crumbs in milk until soft.
  3. Heat oil in frypan and sauté onion over medium heat and leave to cool.
  4. Combine beef mince, sautéed onion from step 3, garlic powder, bread crumbs from step 2, egg, salt and pepper in a bowl.

5. Rub oil on hands and form generous sized hamburgers patties. While shaping hamburger patties gently pat with hands to remove air.
6. Heat oil in frypan and cook on both sides over medium heat. Cook both sides of red onion slices.
7. Butter hamburger buns, add mustard if desired and place lettuce leaf and hamburger patty on the bottom half of the bun. Add tomato, red onion slice and tomato ketchup.
8. Cover with top half of the bun.

### BBQ



Recommended cuts

1 Chuck roll★ 10 2 Rib short rib★ 11 Short plate★

Ingredients

400g beef	150cc tomato ketchup
1 zucchini	1 medium onion
1 red onion	25cc brown sugar
4 mushrooms	A 2tsp apple vinegar
1/3 red pepper	1tbs salad oil
Lemon (or lime)	1tbs whisky
	1 clove garlic
	½tsp mustard

- Method
1. Cut beef into 5cm cubes.
  2. Cut zucchini into 1cm thick slices. Cut red onion into 1cm squares and remove excess dirt from mushrooms. Remove seeds and inner membrane from red pepper and cut to same size as the red onion. Finely chop onion and garlic for the grilling sauce.

3. Heat oil in pot and sauté garlic and onion over low heat. Sauté until onion is slightly opaque, then add remaining ingredients and simmer for approximately 10mins or until sauce reduces.
4. Place beef in grilling sauce and leave to cool in the fridge for 30mins.
5. Place beef and vegetables on steel skewers and grill while basting with grilling sauce.
6. Season with lemon (or lime).

### Pot Roast



Recommended cuts

1 Chuck roll★ 14 D Rump

Ingredients

1kg block beef	1 clove garlic
4 potatoes	400cc chicken stock
80g baby carrots	1tbs salt
5 sticks celery	1tbs pepper
1 onion	3tbs salad oil

- Method
1. Cut beef in half and rub with salt and pepper.
  2. Cut potatoes, with skin on, into eights and celery into 2cm pieces. Remove skin from onion and cut to same size as the potato pieces. Finely chop garlic.
  3. Heat oil in heavy pot over medium heat. Increase heat to high and sear beef on both sides. Once nicely browned add vegetables.

4. When vegetable are lightly cooked, add chicken stock, 200cc of water and bring to the boil over high heat. Remove scum, replace lid and simmer for 50mins over low heat.
5. Season with salt and pepper, remove beef and cut into 2cm pieces. Serve meat onto plates together with cooked vegetables. ※ Top with remaining gravy sauce as desired.

### Chilli Con Carne



Recommended cuts

1 Chuck roll★ 10 2 Rib short rib★ 11 Short plate★

Ingredients

200g beef mince	2 cloves garlic
200g chorizo sausage	1 can (400g) red kidney beans
2tbs olive oil	1 large onion
1 large onion	2 cans (800g) tomatoes
?3 Bay leaves	50cc chilli
1 stick cinnamon	2tsp cumin
?2 jalapenos	Salt & pepper to taste
2 red and 2 yellow peppers	Grated cheese

- Method
1. Roughly chop onion and cut jalapenos in half vertically and remove seeds. Finely chop garlic.
  2. Wrap ingredients from A in gauze and tie off with cooking twine.
  3. Heat olive oil in pot and add beef mince. When cooked through, add garlic and onion and cook until onion is lightly browned. Add chilli, cumin and red kidney beans.

4. Add remaining ingredients, except cheese, including the gauze pack, and simmer over low heat for 2 hours. Every so often remove scum from surface while simmering.
5. Serve onto plates and top with cheese. Enjoy with crackers or bread.



# Italian Cuisine

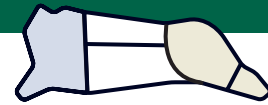
■ Measurement conversions 1cm = 0.39inch / 100g = 3.5oz / 1kg = 35oz / 1tsp = 0.1pt / 1tbs = 0.3pt / 100°C = 212F

★=Specially Recommended Cuts

## Ragout of Beef



### Recommended cuts



5 Brisket 10 D Rump 6 Shank

### Ingredients

500g-1kg block beef	200cc canned tomatoes
½ onion	4 tomatoes
½ carrot	Salt & pepper to taste
½ stick celery	Lard
2tbs olive oil	Flour
500cc red wine	

### Method

1. Finely chop onion, carrot and celery.
2. Sauté onion, carrot and celery until soft.
3. Season beef with salt and pepper and coat with flour.
4. Place lard in frypan and cook beef over high heat until both sides are lightly browned.
5. Transfer beef to large pot and add vegetables from step 2. Add red wine and leave over high heat to burn off alcohol.
6. Peel and seed tomatoes and mash while adding to the pot together with the canned tomatoes. Add with water until ingredients are just covered.
7. Lightly season with salt and pepper and simmer gently for approximately 1 hour.
8. Season with salt and pepper to taste.

## Beef Red Wine Stew



### Recommended cuts



5 Brisket 10 2 Rib short rib★ 6 Shank

### Ingredients

400g block beef	Flour
1/2 onion	400cc red wine
1/3 carrot	1 can tomatoes
1 small stick celery	2tbs olive oil
1 clove garlic	Salt & pepper to taste
A 1 bay leaf	Lard
2 sprigs Italian parsley	
1 sprig sage and rosemary	

### Method

1. Cut beef into generous bite size pieces. Finely chop onion, carrot and celery and remove skin from garlic and cut into halves.
2. Heat olive oil in frypan and sauté onion, carrot and celery until soft.
3. Season beef with salt and pepper and coat with flour. Place lard in separate frypan and cook beef over high heat until browned on both sides.
4. Transfer beef to oven-proof pot and add sautéed vegetables from step 2.
5. Add red wine and cook over high heat to burn off alcohol. Add ingredients from A and the can of tomatoes, bring to the boil and reduce to low heat.
6. Lightly season with salt and pepper and replace lid. Transfer pot to oven preheated to 200°C and bake for approximately 90mins.
7. Remove soup and reduce until slightly thickened. Serve meat on plates and top with thickened sauce.

Italian cuisine that effectively uses the inherent flavor of beef can be further enhanced with Wagyu. Italian cuisine provides a wide range of uses for block meat in an extensive range of recipes.

## Beef Tagliata



### Recommended cuts



10 2 Rib short rib★ 11 Short plate★ 13 Top-round

### Ingredients

1 (200g) block beef	100cc olive oil
3-4 sprigs endives	1tsp balsamic vinegar
3 mushrooms	1 sprig rosemary
20g parmesan cheese	1 clove garlic
Salt & pepper to taste	

### Method

1. Combine finely chopped rosemary and garlic in a bowl. Dress with olive oil, salt, pepper and balsamic vinegar and mix well.
2. Cut endives into bite size pieces, slice mushrooms and use a peeler or grater to slice parmesan cheese.
3. Season both sides of beef strongly with salt and pepper, heat olive oil in fry pan and lightly sear beef over high heat on both sides.
4. Remove beef from frypan and slice thinly.
5. Serve endives onto plates and top with sliced beef, parmesan cheese and mushrooms. Drizzle with dressing prepared in step 1.

## Milan-style Cutlets



### Recommended cuts



1 Chuck roll★ 2 Shoulder clod 13 Top-round

### Ingredients

4, 80g beef steaks	Flour
100g fine bread crumbs	Salt and pepper to taste
50g parmesan cheese	200cc Olive oil
5g garlic	Lemon
1/2 tsp Italian parsley	
2 eggs	

### Method

1. Combine bread crumbs, finely chopped garlic, Italian parsley and grated parmesan cheese in a shallow tray/bowl.
2. Wrap beef in plastic and gently stretch out with a meat mallet, removing excess sinew and season with salt & pepper.
3. Combine egg with 1tbs of water.
4. Place flour, egg and combined bread crumbs from step 1 into separate trays/bowls. Coat individual beef steaks in flour, egg and bread crumbs (in that order).
5. Use back of knife to create a lattice pattern on steaks.
6. Heat olive oil in frypan and when bubbling, add steaks and cook over medium heat on both sides until golden brown.
7. Remove oil and serve onto plates with lemon slices.  
※Serve with salad if desired.



# Chinese Cuisine

■ Measurement conversions 1cm = 0.39inch / 100g = 3.5oz / 1kg = 35oz / 1tsp = 0.1pt / 1tbs = 0.3pt / 100°C = 212F

★ = Specially recommended cuts

## Spicy Beef and Tomato Stir Fry

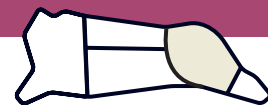


### Recommended cuts

12 Gooseneck round★ 13 Top-round

### Ingredients

200g Stir fry beef	2tsp corn starch
2 tomatoes	1tsp oil
1/2 lettuce	Sauce:
Ginger	2tbs tomato ketchup, cooking sake
1 clove garlic	1tsp soy sauce
Beef Seasoning:	1tbs chili bean paste
Salt & pepper to taste	2tsp corn starch Oil
2tbs cooking sake	



### Method

1. Place tomatoes in boiling water to remove skin and cut into quarters. Wash lettuce, drain excess water and tear using hands into bite-size pieces. Finely chop ginger.
2. Cut thinly sliced beef into easy-to-eat pieces and season lightly with salt and pepper.
3. Rub ingredients from step 1 in the beef seasoning in the order of salt, pepper, cooking sake and oil. Quickly sauté lettuce, remove from pan and drizzle with hot water to remove excess oil.

4. Quickly sauté beef (removed from pan when beef begins to change color).
5. Heat oil in wok, add crushed garlic, ginger and chili bean paste and sauté until aromatic, add beef and tomatoes. While stirring gently crush tomatoes with a ladle, however leave with some distinguishable shape.
6. Add lettuce and sauce.
7. Add corn starch dissolved in water and cook until sauce thickens.

## Shredded Beef with Green Pepper



### Recommended cuts

2 Shoulder clod 4 Chuck tender 12 Gooseneck round★

### Ingredients

150g beef	1tbs Shaoxing rice wine, soy sauce
6 green peppers	1tsp sugar
(of which 1 should be red)	1tbs oyster sauce
100g bamboo shoots in spring water	1tbs Chinese soup stock (powder)
1 clove garlic	Beef Seasoning:
Ginger	1tbs Shaoxing rice wine, soy sauce
3tbs salad oil	1tbs salad oil
Beef Seasoning:	Salt & pepper to taste
	2tsp corn starch



### Method

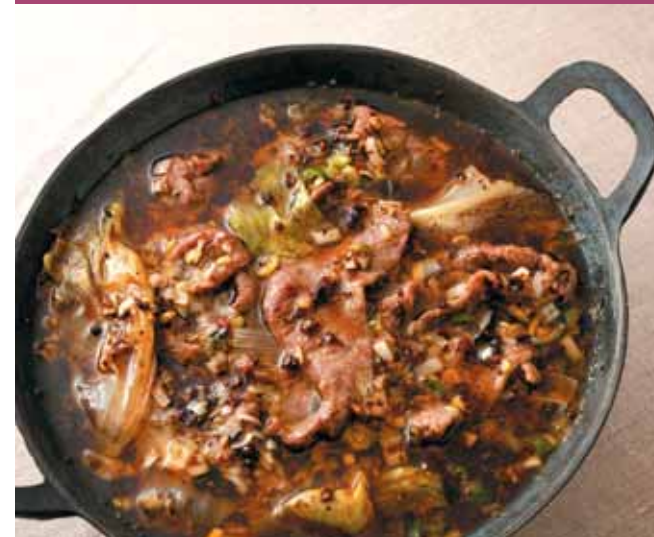
1. Cut beef into 1cm strips. Combine sauce ingredients.
2. Slice green peppers and bamboo shoots into 5mm strips. Finely chop garlic and ginger.
3. Rub beef seasoning into beef.

4. Heat oil in wok and sauté garlic and ginger over low until aromatic. Add beef and cook over medium heat.
5. When the meat begins to brown, add vegetables and cook over high heat.
6. Add sauce and cook until heated through.

The most appealing of Chinese cuisine, also referred to as the art of flame and fire is the stir fry.

The full-bodied flavor of Wagyu after it is cooked is exquisite. The rump used in the following recipes was whole cuts and is a very easy-to-use cut of beef.

## Poached Sliced Beef in Hot Chili Oil

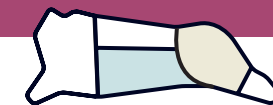


### Recommended cuts

10 2 Rib short rib★ 11 Short plate★ 12 Gooseneck round★

### Ingredients

200g thinly sliced beef	2tbs Szechuan pepper
1/2 lettuce	10 red chilies (whole)
Beef Seasoning:	10cm shallots
1tsp soy sauce	1/2 clove garlic
1tbs corn starch,	1tbs chili bean paste, soy sauce
Shaoxing rice wine	1/2tbs black bean paste
1/2 egg white	3tbs Shaoxing rice wine
Chili Oil:	2tsp salt
200cc salad oil	500cc Chinese soup stock



### Method

1. Cut beef into 5cm widths, rub with beef seasoning and leave to stand in fridge for 30mins. Tear lettuce into bite-size pieces.
2. Add salad oil, Szechuan pepper, seeded chili and finely chopped shallot and garlic to wok and cook over low heat until aromatic and oil colors. (be careful not to burn ingredients) Strain oil using extremely fine colander or gauze into separate pot and finely chop remaining spices.

3. Add chili bean paste to wok and cook until oil turns a red color, add black bean paste and sauté quickly, add Shaoxing rice wine and soy sauce.
4. Once sauce thickens slightly add 500cc Chinese soup stock, taste and add salt if required.
5. Cook over high heat, adding lettuce when mixture comes to the boil. Remove lettuce when soft and serve onto deep plates or bowls.
6. Add beef to remaining soup gently stirring until just cooked. (approx. 1min)

## Beef in Oyster Sauce

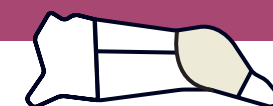


### Recommended cuts

12 Gooseneck round★ 13 Top-round

### Ingredients

200g beef	4 baby bok choy leaves
Shaoxing rice wine	1tsp Soy sauce
A Soy sauce	B 1tsp Shaoxing rice wine, sugar
Pinch salt, sugar	1tbs Chinese soup stock (Powder)
1/2 egg white	1 clove garlic
1tsp corn starch	C Ginger
2tsp oyster sauce	5cm shallot
Salt	Shallot for garnish



### Method

1. Combine ingredients from A, rub into beef and leave to stand in fridge for 20mins. Score a cross into the stem of the bok choy leaves, finely chop ingredients from C. Take the shallot (for garnish) and with sharp scissors, cut the green top down to where the hard stem starts to make a curl.
2. Dissolve 1tsp of corn starch in 2tsp water. Combine egg white with beef from step 1 and mix in corn starch mixture. The trick is to mix quickly so as to avoid the mixture turning gluggy.

3. Place bok choy in boiling water with a pinch of salt and a little oil and boil until soft.
4. Heat oil in wok to 150°C and sauté beef until just cooked (approx. 1min)
5. Heat oil in frypan and combine with oyster sauce.
6. Add ingredients from C, sauté until aromatic and reduce to medium heat. Add ingredients from B, beef and cook until sauce thickens.
7. Serve beef and bok choy on plates and garnish with shallots.



# Korean Cuisine

Korean cuisine is made up of a multitude of recipes that utilize an extensive range of beef cuts. The tender, sweet flavor of Wagyu makes it perfect for yakiniku (Korean BBQ) and ideal for use in combination with vegetables and soups.

■ Measurement conversions 1cm=0.39inch/ 100g=3.5oz/ 1kg=35oz/ 1tsp=0.1pt/ 1tbs=0.3pt/ 100°C=212F  
★=Specially recommended cuts

## Bulgogi



### Recommended cuts

1 Chuck roll★ 10 2 Rib short rib★ 11 Short plate★

### Ingredients

600g thinly sliced beef	2tbs Shaoxing rice wine, honey
2tbs sugar	3 cloves garlic
1 large onion	1/4 apple (or pear)
1 large carrot	1-2tbs pepper
3 shiitake mushrooms	2tbs white sesame seeds
1/2 bunch Welsh onion	1/4 onion
3tbs sesame oil	
Marinade:	
5tbs soy sauce	

### Method

- 1.Cut beef into bite-size pieces. Thinly slice onion, carrot and shiitake mushrooms and cut Welsh onion into 3-4cm lengths. Grate garlic, apple (or pear) and onion.
- 2.Combine sugar with beef and leave to stand for 30mins.
- 3.Combine all ingredients for the marinade.

- 4.Dip each piece of meat in marinade individually. Place beef into a sealable container with vegetables except, Welsh onion, layered over the top. Drizzle with sesame oil, seal container and leave to stand in the fridge for 3-5hrs.
- 5.Add Welsh onion directly before cooking and sauté beef and vegetables together.

## Yuke Jang



### Recommended cuts

12 Gooseneck round★ 13 Top-round

### Ingredients

200g beef	1 egg
2 cloves garlic	50g chives
1 shallot (green half)	Sauce:
Seasoning:	3tbs salad oil
11/2 tbs soy sauce	1tsp-1tbs chili powder
2tbs shallots (chopped)	(add to preference)
80g royal fern (in water)	1 clove garlic
2 shallots	1tsp soy sauce
	1tbs sesame oil

### Method

- 1.Finely chop shallot and garlic for seasoning. Grind sesame seeds. Cut royal fern and chives into 5cm lengths. Cut bottom half of shallot into diagonal lengths and parboil.
- 2.Heat salad oil in frypan, add crushed garlic, chili powder and sauté over low heat. Once aromatic, add soy sauce, sesame oil and remove from heat. Leave to stand for approx. 20mins.
- 3.Place beef in heavy pot, add green half of shallot, garlic and water until ingredients are just covered and cook over high heat. When mixture comes to the boil reduce to low heat and simmer for 2hrs

- periodically removing scum from the surface. Remove shallot, garlic and simmer for a further 40mins. Remove beef from soup and use hands to break up into bite-size pieces.
- 4.Combine beef, royal fern, and shallot with seasoning.
- 5.Using a separate pot, add 1tbs of sauce and gently sauté royal fern. Add soup, beef and shallots.
- 6.Season to taste with soy sauce and salt (extra) and add sauce to suit individual preference. (Sauce will make soup spicier)
- 7.Stir in lightly beaten egg and add chives when egg is just cooked.

## Korean Ribs



### Recommended cuts

1 Chuck roll★ 10 2 Rib short rib★ 11 Short plate★

### Ingredients

400g beef	4 green chili peppers
Asparagus lettuce	Perilla leaves
1/2 carrot	1tsp roasted salt
2 cloves garlic	4tbs sesame oil
1 onion	Gochujang
	(Korean chili paste)

### Method

- 1.Cut carrot and green chilies into thin slices, slice garlic and onion and leave onion slices to stand in water.
- 2.Arrange prepared vegetables on a large serving dish.
- 3.Combine sesame oil and salt and leave on a small dipping plate. Arrange gochujang on a separate dipping plate.

- 4.Broil beef over a hotplate and place on lettuce and perilla leaves. Use leaves to wrap meat with garlic and other vegetables and dip in sesame oil (with salt) or gochujang as preferred.

## Spicy Korean Hotpo



### Recommended cuts

13 Top-round 14 D Rump

### Ingredients

300g thinly sliced beef	2tbs cooking sake
Seasoning:	20cm Chinese radish
2tbs soy sauce	100g carrot
1tsp finely grated garlic	1/2 bunch (20g) Welsh onion
1tbs white sesame seeds	6 fresh shiitake mushrooms
1tbs sesame oil	1/2 onion
1tsp sugar	1/2 red pepper
Pepper	2 eggs

### Method

- 1.Cut thinly sliced beef into 1cm widths, combine seasoning ingredients and use hands to rub seasoning into beef.
- 2.Cut Chinese radish, carrot, red pepper and Welsh onion into 7cm lengths. Thinly slice shiitake mushrooms and onion.

- 3.Line bottom of pot with onion and arrange beef, and other vegetables in a radial pattern. Break raw egg and place in the center.
- 4.Place over heat and eat while combining ingredients once simmering.

\* Add additional water if ingredients start to burn.



# Japanese Cuisine

Japanese cuisine is extremely varied and includes raw, stewed and fried dishes. Signature Japanese beef dishes maximize the characteristics of Wagyu including its freshness, tenderness and full-bodied flavor through improvements to the way beef is thinly sliced and ground

■ Measurement conversions 1cm = 0.39inch / 100g = 3.5oz / 1kg = 35oz / 1tsp = 0.1pt / 1tbs = 0.3pt / 100°C = 212F

★ = Specially Recommended Cuts

## Japanese Beef Mince Cutlets



### Recommended cuts



3 Neck 6 Shank

### Ingredients

400g beef mince  
120g onion  
1 egg  
10g bread crumbs  
Nutmeg  
Salt & pepper to taste  
Bulldog sauce

Batter:  
Flour  
1 egg  
1tbs water  
Salt & pepper to taste  
Bread crumbs

### Method

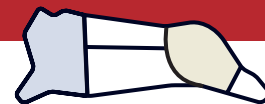
1. Place beef mince, finely chopped onion, egg, bread crumbs, nutmeg, salt and pepper in a bowl and mix well.
2. Using both hands, shape 4 equal sized patties tossing between hands to remove excess air. Patties should be an oval shape with a thickness of approx. 7-8mm.
3. Lightly beat egg and add water, salt and pepper.

4. Dip patties in flour, the egg mixture from step 3 and finally coat with bread crumbs.
5. Heat deep frying oil to 170°C and fry the patties until golden brown.
6. Serve onto plates and drizzle with Bulldog sauce.

## Japanese Beef Carpaccio



### Recommended cuts



4 Chuck tender 13 Top-round

### Ingredients

300g block beef  
Salt  
Chinese radish sprouts  
1 Japanese ginger  
Grated Chinese radish  
(sprinkled with chili powder)

Sauce:  
50cc soy sauce  
50cc cooking sake  
50cc mirin  
50cc bonito stock

### Method

1. Rub salt into beef and leave to stand for 5mins.
2. Cut Chinese radish sprouts into 4cm lengths. Cut Japanese ginger into thin strips, stand in water, remove and drain excess water.
3. Place sauce ingredients in pot and bring to the boil, remove from heat and allow to cool.

4. Lightly sear beef on all sides and while still hot leave to stand in prepared sauce for 3-4hrs.
5. Before serving, slice beef into 3mm slices and serve on plates together with Chinese radish sprouts, Japanese ginger and grated Chinese radish (sprinkled with chili powder).

## Sukiyaki



### Recommended cuts



1 Chuck roll★ 12 Gooseneck round★

### Ingredients

800g thinly sliced beef  
2 shallots  
300g shirataki noodles  
1/2 bunch shungiku  
(Garland Chrysanthemum)  
8 shiitake mushrooms

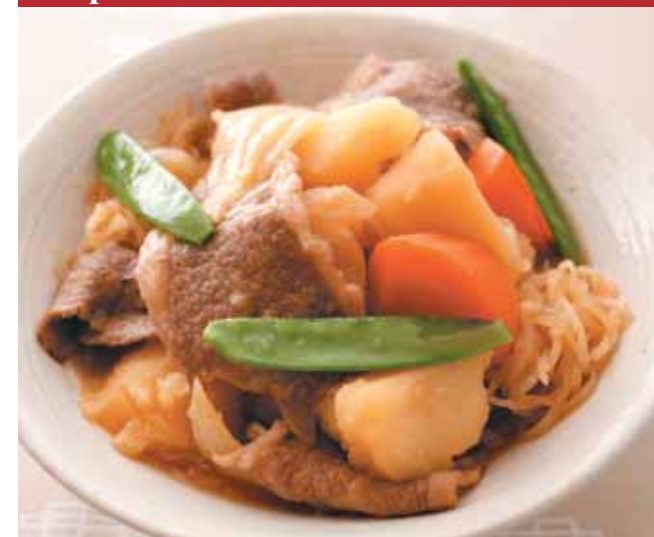
4 eggs  
20g beef fat  
Sauce:  
4tbs brown sugar  
200cc soy sauce  
100cc mirin  
200cc cooking sake

### Method

1. Diagonally slice shallots. Boil shirataki noodles for 5 minutes, drain and cut into easy-to-eat lengths. Remove leaf and soft stem from shungiku. Cut stalk from shiitake mushrooms and using a sharp knife, score a cross in the mushroom head. Cut grilled tofu into 2cm thick cubes.
2. Place sauce ingredients into pot and cook over medium heat until sugar dissolves. Remove from heat and leave to cool.
3. Place sukiyaki pot over high heat, add beef fat and spread fat over the entire cooking surface.

4. Add beef to pot, cook slightly and add a little of the cooled sauce and caramelize.
  5. Add shirataki noodles and combine with beef and slightly caramelized sauce then add remaining ingredients.
  6. Serve sukiyaki into bowls with a separate serving bowl containing slightly beaten egg.
- ※ The point to making good sukiyaki is not to add too much of the sauce at once. Gradually add sauce while cooking.
- ※ You can always add extra stock or cooking sake if cooking sauce boils down too much.

## Japanese Beef and Potato Stew



### Recommended cuts



10 2 Rib short rib★ 11 Short plate★

### Ingredients

200g sliced beef  
100g shirataki noodles  
300g potato  
1/2 carrot  
1 onion  
40g snow peas  
20g beef fat

Stock:  
500cc bonito stock  
2 1/2tbs soy sauce  
2/3tbs sugar  
1 1/2tbs cooking sake  
1 1/2tbs mirin

### Method

1. Peel potatoes and cut into thirds or quarters and leave in water. Remove skin from onion and cut coarsely into sixths. Peel carrot and cut into bite-size chunks. Boil shirataki noodles in water for 5mins, drain and cut into easy-to-eat lengths. Remove string that runs down the back of the snow peas.
2. Heat beef fat in deep pot, add shirataki noodles, potato, carrot, onion and beef in that order and cook gently.

3. Add bonito stock, bring to the boil and remove scum from the surface. Simmer over medium heat for 5 minutes. Increase heat to high and boil until soups gets a shiny luster. Add remaining stock and cover ingredients with lid. Simmer over low heat until stock is reduced to 1/3. Add snow peas and simmer until just soft and remove from heat.



# High-level Measures to Ensure Meat Safety

In order to ensure the provision of safe beef to consumers, Japan has established a stringent system of inspections and checks that cover the production, treatment, processing and distribution of beef.

## BSE Prevention Measures in Japan

Japan maintains the following stringent regulations and inspections as a measure against BSE.

### Thorough removal of infection sources through legislation

#### 1 Prohibition of the use of Meat and Bone Meal (MBM)

As of October 2001, the use of Meat and Bone Meal, thought to be one source of BSE infection, was prohibited by law. Currently only grains such as rice straw, wheat and corn are used as cattle feed.

#### 2 Compulsory removal and incineration of Specified Risk Materials (SRMs)

As 2001 the Ministry of Health, Labor and Welfare implemented the removal and incineration of cattle heads, (excluding the tongue and cheek flesh), spinal cords, vertebral column and distal ileum of cattle in slaughterhouses.

### Strictest standards in the world for BSE inspections

From October 2001, all cattle became subject to BSE inspections. In May 2005, the age of cattle subject to BSE inspections was lowered to 21 months and has been recognized as the most stringent inspections in the world in comparison to global standards.

#### 1 Inspections and guidance at breeding and fattening farms

Inspectors with veterinary qualifications from prefectural livestock hygiene service centers periodically visit breeding farms (farms that raise calves to 8-9 months old) and fattening farms (farms that raise calves purchased at cattle sales to maturity from between 18-20 months) to conduct inspections and offer guidance and evaluations, including BSE inspections, are carried out on cattle at risk of BSE.

#### 2 Slaughterhouse inspections

Cattle taken to the slaughterhouses are subject to stringent inspections by inspectors from meat inspection centers and only carcasses that pass can be further processed. At the slaughterhouse, screening tests are carried out on all cattle in order to weed out all the BSE risk cattle. Samples of accumulations of prions and medulla oblongata are taken for testing with the enzyme-linked immunosorbent assay, (\*1ELIZA method). In the event of a positive result, further tests are carried out using (\*2Western Blot tests) or (\*3Immunohistochemistry tests). Cattle that show a positive specialists, are incinerated while specific parts are kept for research purposes. result to these tests and are given a definite diagnosis following discussions by a council of national specialists, are incinerated while specific parts are kept for research purposes.

\*1 The ELIZA Method  
The ELIZA Method is used to treat sample prions taken from the medulla oblongata with protein breaking enzymes. Any remaining abnormal prion proteins are then extracted and concentrated. A reagent that will react to the abnormal prion proteins is then added to produce a colorimetric reaction and the concentration of the color measured. As results are available in as little as six hours, this method is currently used all around the world. It is effective as a screening test to detect risk cattle from the large number of subjects and is used as a means of diagnosis to proceed to more accurate tests in the event of a positive result.

\*2 Western Blot tests  
Up until the point of concentrating abnormal prion proteins, this test is identical to the ELIZA method. Proteins are then separated by electric charge, transferred onto a membrane and checked for an immune response. This is determined by the occurrence of a colorimetric reaction, protein transfer and shape of the band. It is said that the process generally requires approximately 12 hours.

\*3 Immunohistochemistry tests  
Immunohistochemistry tests generally require more than two days and are a method of detecting BSE by adding reagents that will react with BSE abnormal prion proteins to create a colorimetric reaction. In order to achieve a more accurate diagnosis, they are commonly used in unison with Western Blot tests however are not common practice in the EU.

### Establishment of a traceability system

Japan has established a traceability system providing records of production and distribution from the time of birth of all domestic cattle right up until the time it is supplied to the consumer. This highly transparent system, allowing access to information to any one at any time, enables prompt detection of the source in the event of a problem and protection of the consumer.

Beef traceability Homepage Address:  
<https://www.id.nlb.go.jp/english/top.html>

#### 1 Individual identification numbers for all cattle

All cattle born in Japan and live cattle imported into Japan are given a clearly identifiable 10 digit individual identification number fixed to the ear of the cattle. In the years to come, this number, together with the cattle, will pass through a variety of distribution channels before reaching the consumer.

#### 2 Cattle database(enacted December 1, 2003)

Individual identification numbers are registered upon submission of data concerning cattle from the producer. Information for each head of cattle including the date of birth, sex, breed, name and address of the owner, fattening method used, ancestry and date of slaughter is recorded and compiled into a database and this data formed into a "Family Register" of the herd.

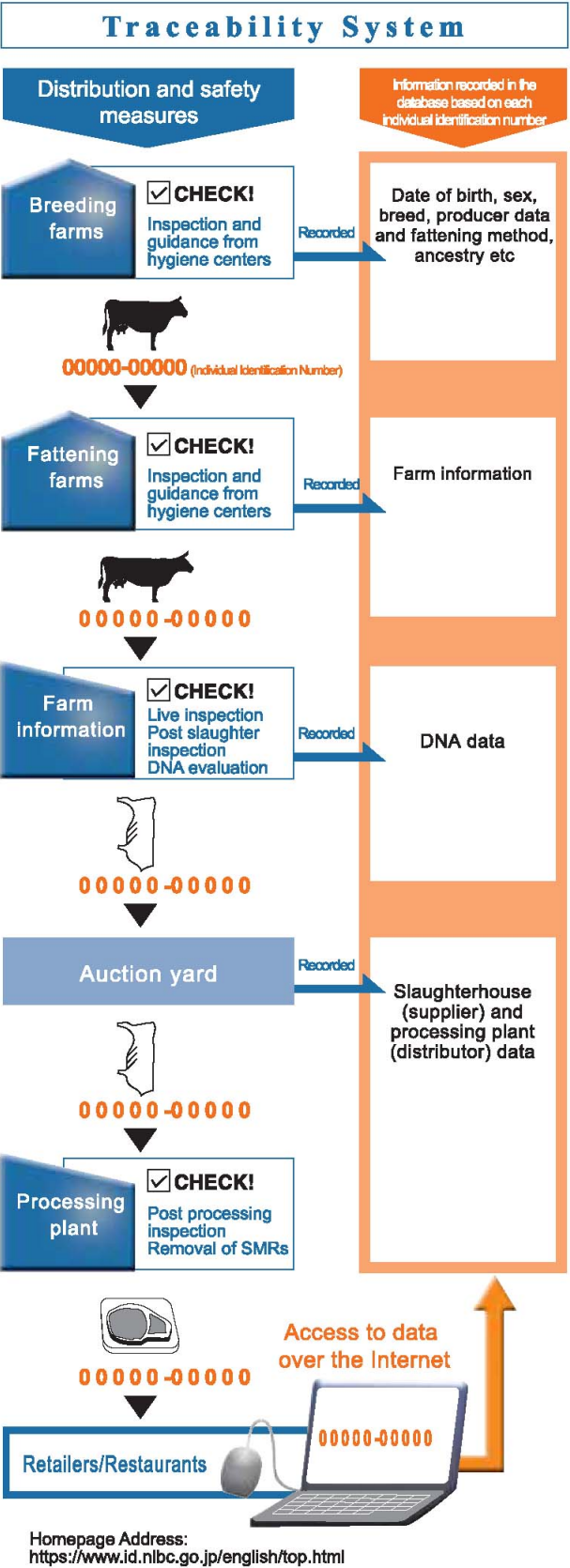
Following initial registration, information is further added to the database from breeding farms, fattening farms, meat wholesale centers and retailers.

#### 3 Display of the identification number and transaction records

Following slaughter, the carcass is processed into cuts and dressed meat and through the distribution process the individual identification number is displayed on the product by each individual distributor and the information of retailers etc. recorded and stored in the database.

#### 4 Access to production and distribution records

By means of step 1-3 above, consumers are able to search for and gain access to production and distribution records over the Internet based on the individual identification number provided on Wagyu meat products.



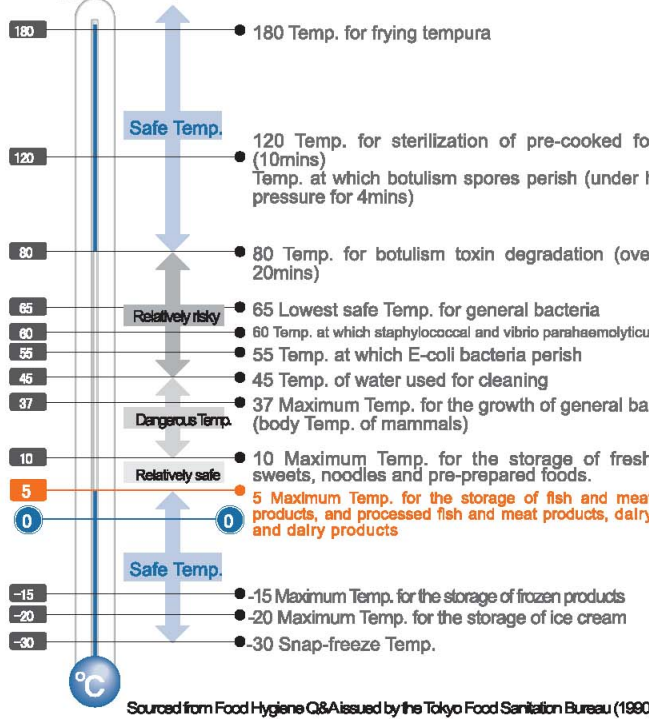
## Freshness management and bacteria control

### Total temperature control to preserve freshness

Temperature control is necessary in order to prevent decay and increases in bacteria. Beef is frozen or refrigerated and is maintained at a low temperature through all the stages of distribution from production, processing, fabrication and retail up until the time it reaches the consumer in what is referred to as a cold chain. For example, even where the meat is cut or packed, it is maintained at a temperature of approximately 0°C. Work rooms are also maintained at low temperatures and work completed quickly. Meat is also distributed in refrigerated transport maintaining total temperature control.

### Safe and risky temperatures for food storage

Meat products should always be stored at a temperature of approximately 0°C.



### Prevention of food poisoning causing bacteria

Cattle, goats and sheep are known to carry enterohemorrhagic Escherichia coli, one bacterium that is known to cause food poisoning and originate from domestic livestock. As one measure to prevent food poisoning, the intestinal tract is ligatured to in order to avoid contamination of meat from the contents of the intestines during meat fabrication at slaughterhouses.